



Horwitz

Over 100 Years of Innovation and Excellence

www.horwitzinc.com

DESIGN-BUILD  
**LEGACY**

BIG FOOTPRINTS

THRIVENT FINANCIAL - HEADQUARTERS



Over 100 Years of Innovation and Excellence





**Over 100 Years of  
Innovation and Excellence**

**ON TARGET:** Target Plaza is one of the many spectacular buildings that frames the Minneapolis skyline. Horwitz has had the privilege of working on many of Target's corporate buildings, with a relationship that dates back to the 1990s.



**DOWNTOWN EAST:** The two 17-story Wells Fargo office buildings have helped transform the Minneapolis Downtown East neighborhood into a vibrant part of the city. Horwitz played a vital role in building the largest office project in Minneapolis since 1992.



**THE COMPLETED BUILDINGS**



**LOOKING AHEAD:** Horwitz played a vital role in the construction of Downtown East, one of the largest real estate projects in Minneapolis history. A mixed-use development consisting of offices, residential housing, retail, and a nine-acre park is a catalyst for economic and cultural growth in the neighborhood.



PHOTO CREDIT / ERIC BEST

# ICONIC TREASURES **PRESERVED** AND RENEWED

**PRESERVING THE PAST:** Horwitz has a long history of refurbishing historic buildings. Some of the many buildings include: W Minneapolis, The Foshay (right) – formerly the Foshay Tower, Midtown Exchange (far right) – formerly the Sears Roebuck & Co. mail order warehouse and retail store. Other icons include: Westin Hotel – formerly the First Farmers and Mechanics Savings Bank, the Basilica of St. Marys, the Warren E. Burger Federal Building, Embassy Suites Downtown – formerly Plymouth Building, North Memorial Hospital, Donaldson Manufacturing, Valspar Corporation, General Mills, Honeywell, Hiawatha Metalcraft, and the Hazelden Foundation.

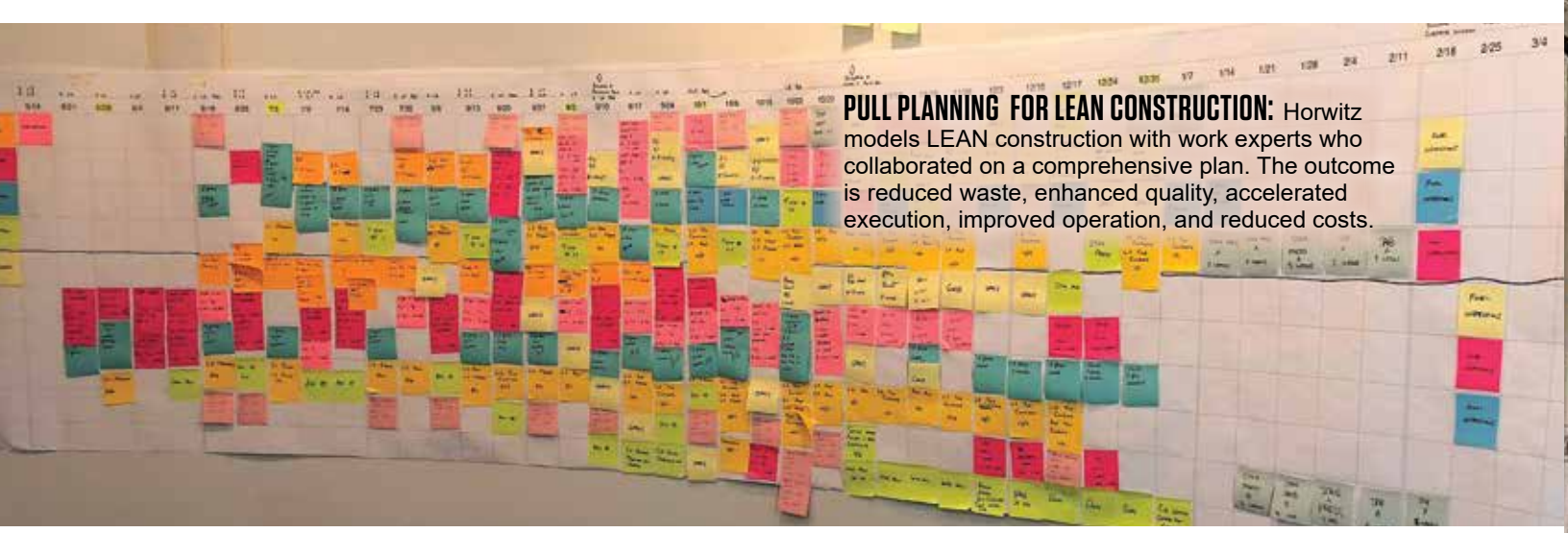




**THE PAST MEETS MODERN:** The Nordic House is a pair of buildings in North Loop Minneapolis. One is an 11-story core and shell office building with retail spaces on the first level. The other is a 9-story condominium building that also offers short-term rentals. In between the buildings is an 8-story parking ramp with underground parking across the entire footprint of both buildings.



**GREEN FRIENDLY:** The Element Hotel by Westin, is a 7-story hotel near the Mall of America. The environment-friendly features of this project range from high-performance wall assemblies to sustainable building materials with more than 100,000 sq. ft. of precast concrete.



**PULL PLANNING FOR LEAN CONSTRUCTION:** Horwitz models LEAN construction with work experts who collaborated on a comprehensive plan. The outcome is reduced waste, enhanced quality, accelerated execution, improved operation, and reduced costs.



# ALL OF US CARE ABOUT HEALTHCARE

## HOSPITALS, CLINICS, PHARMACEUTICAL AND MEDICAL MANUFACTURING

Horwitz has proudly worked on numerous hospitals and clinics in the Twin Cities. We understand how important lives are and the role high quality facilities play for health providers to create optimal outcomes in helping patients. These high stake projects require exceptional attention to detail and flawless execution. Horwitz truly enjoys seeing the impact these facilities bestow on the young and old alike. Horwitz is pleased to work on new construction, additions, and renovations with all medical entities.

- Children's Hospital** – Renovation – St. Paul
- Children's Hospital and Clinic** – Renovation – Minnetonka
- Children's Hospital** – Ambulatory Care Center Morgue, Procedure, and Pharmacy, Rehabilitation Facilities – Minneapolis
- Children's Hospitals and Clinics, ENT Clinic** – Renovation – Woodbury
- Hutchinson Hospital** – New Construction Addition – Hutchinson
- North Memorial Health Hospital** – Chiller Replacement – Robbinsdale
- North Memorial Health Hospital** – Plumbing/HVAC – Robbinsdale
- North Memorial Health Hospital** – Operating Room Upgrades – Robbinsdale
- North Memorial Health Hospital** – Medical Gas Compliance Project – Robbinsdale
- North Memorial Health Hospital** – HVAC Upgrades – Robbinsdale
- Allina Clinics** – Multiple New Construction Projects – Various Twin Cities Locations
- Osceola Medical Center** – Full Service Hospital, Including Procedure, Operatory, MRI and X-Ray Facilities – Osceola, WI
- Health Partners** – Multiple Remodels – Various Twin Cities Locations
- Courage Kenny Rehabilitation Institute** – Plumbing – Coon Rapids
- Summit Orthopedics** – Surgery Center Plumbing - Woodbury
- Minneapolis Heart Institute** – Tenant Finish – Minneapolis
- Suburban Imaging** – Plumbing/HVAC – Coon Rapids
- Landmark Surgery Suites** – Plumbing – Woodbury
- Oakdale OB/GYN** – Plumbing/HVAC – Maple Grove
- West Health OB/GYN** – Tenant Finish – Plymouth
- Cantel Medical** – R&D Lab Expansion – Plymouth
- Bethesda Hospital** – Plumbing/HVAC – St. Paul
- Oakdale Medical** – Plumbing – Robbinsdale



**HOW COOL IS THAT?** Horwitz installed a state of the art central cooling plant for the Medtronic - Research Laboratories.



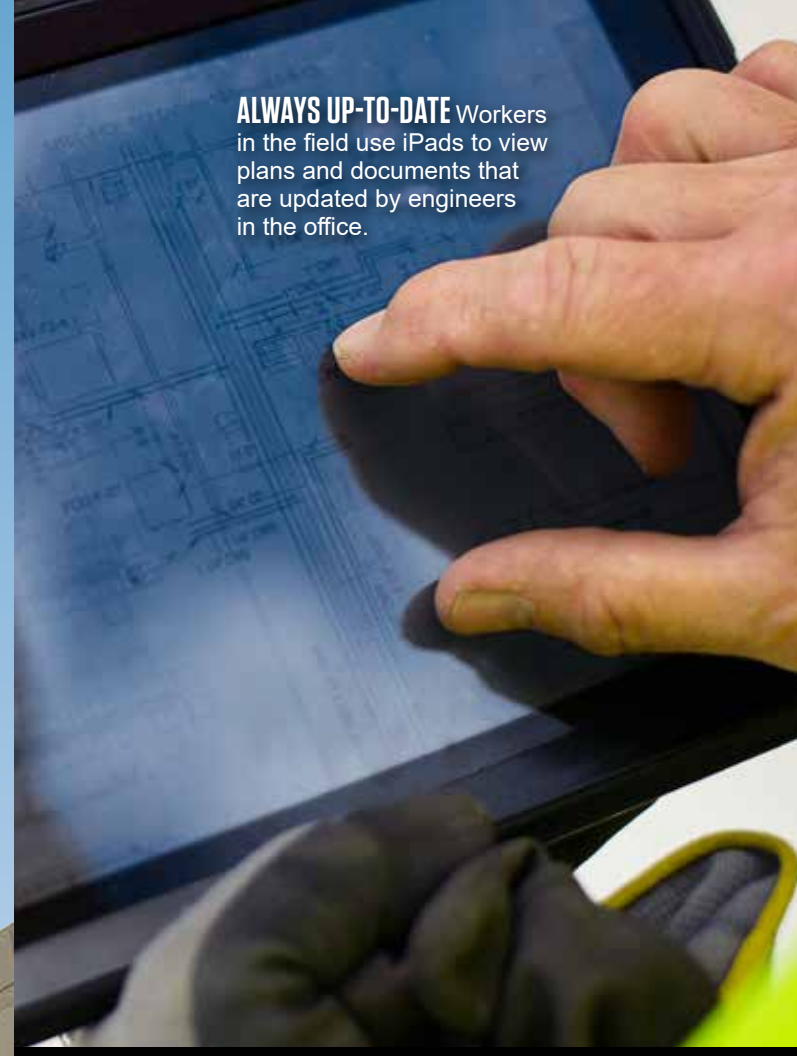
**STELLAR PRE-FABRICATION:** The Medtronic Dry Room project has a 40" raised floor that houses power, data, dust collection, vacuum, titanium exhaust, solvent exhaust, process chilled water, argon, nitrogen, helium, and compressed air. Horwitz perfectly fabricated and assembled the entire system before a single piece of raised floor was installed.



**SUSTAINABLE LUXURY:** At 26 stories, The Nic on Fifth is the first highrise luxury apartment development in Minneapolis in almost three decades. Horwitz's LEED® Accredited Professionals have ensured that the building achieved the goal of becoming LEED® Silver Certified.



**ALWAYS UP-TO-DATE** Workers in the field use iPads to view plans and documents that are updated by engineers in the office.







**UNIVERSITY OF MINNESOTA - ATHLETES VILLAGE:**  
Horwitz is proud to have partnered with the University of Minnesota Athletics, M.A. Mortenson Co., BWBR, and MEP Associates on Athletes Village. The spectacular Center for Excellence, Football Performance Center, and Indoor Football Practice Facility have transformed the University of Minnesota footprint. Horwitz is also honored to have partnered with the U of M on the rebuilding of Centennial Hall, Frontier Hall, Sanford Hall, Maturi Sports Pavillion and Gibson Nagurski .



# A REPUTATION OVER 100 YEARS STRONG

For over 100 years, Horwitz has provided the highest quality mechanical design, construction, and service in the industry. Horwitz is a differentiator in specialty construction with a wealth of knowledge and has expanded to 4,000 plus projects per year and over 450 employees. We have been partners on some of the largest and most important projects ever built in the Twin Cities. Our reputation and legacy are unmatched in the Twin Cities.

Horwitz employees are constantly improving by working smarter, more professionally, efficiently, and safely. We're looking forward to what the next 100 years will bring.

## SECTORS

With over 100 Years of experience, Horwitz has developed expertise in a wide array of market segments. These include:

### **COMMERCIAL/INSTITUTIONAL**

Central Plants | Auto Dealerships | Offices | Parking Ramps | Retail

### **TECHNOLOGY**

Biopharmaceutical | Clean Rooms | Labs | Electronics | Telecommunications | Data Centers

### **MEDICAL/HEALTHCARE**

Hospitals | Clinics | Pharmaceutical | Medical Manufacturing | Extended Care | Dental

### **ENTERTAINMENT**

Stadiums | Casinos | Theatres | Studios | Museums

### **INDUSTRIAL/MANUFACTURING**

Aerospace | Manufacturing | Pharmaceutical | Semi-Conductor

### **HOSPITALITY**

Hotels | Condos | Apartments | Resorts | Restaurants

# AN AMERICAN SUCCESS STORY



**Harry Sam Horwitz** was the second of five siblings born in a small town in Lithuania in 1885. The family moved to Minneapolis in 1895 and his father opened a grocery store and the family started to grow. After learning the plumbing trade Harry went into business with a friend, Tony Miller. **In 1918**, he branched out to create Harry S. Horwitz & Co. in downtown Minneapolis. Harry started working in the residential sector but quickly evolved his business into one that would help define the Twin Cities. The company grew through the decades, establishing the core values of integrity, dependability, and performance. Harry remained active with the company until the 1960s after which the leadership evolved from within the company and that tradition continues today.

**Today**, Horwitz provides a unique opportunity for our clients to experience an alternative to the traditional contracting world. We provide full-time field technicians in several facilities to help maintain their mechanical infrastructure. We excel in providing cost-effective and environmentally responsible construction solutions that surpass your expectations. Combine that with superior ongoing service support to ensure efficient operation of your environmental systems, and you will be sure to maximize the investment you've made in your building!



► **In 1950**, Horwitz moved to 318 South Third Street, Minneapolis.

► **In 1980**, Horwitz was incorporated as **Horwitz, Inc.**

► **In 1954**, Horwitz was incorporated as **Harry S. Horwitz & Co., Inc.**

► **In 1982**, Horwitz grew and moved to 5000 North County Road 18, New Hope.

► **In 1958**, Horwitz moved to 1411 11th Avenue South, Minneapolis.

► **In 1997**, Horwitz expanded to 8825 Xylon Avenue North, Brooklyn Park.

► **In 1967**, **H.S. Horwitz, Inc.** became the new legal name.

# 1930

► **In 2007**, Horwitz grew and moved to 4401 Quebec Avenue North, New Hope.

► **In 2008**, Horwitz brought both companies into our office and warehouse location.

Horwitz acquired NSI to complement our efforts in maintaining a leadership position in the commercial and industrial HVAC and plumbing service industry.

## SHEET METAL

## SERVICE AND PREVENTATIVE MAINTENANCE

► **In 2014**, a full plumbing and piping fabrication shop was constructed.

This allows Horwitz to provide higher quality systems more cost effectively and utilize "just-in-time" delivery for expedited schedules.

## FULL PLUMBING AND PIPING FABRICATION

► **In 2015**, Horwitz acquired Tempco, Inc. and is certified by Johnson Controls as an Authorized Building Controls Specialist (ABC). Tempco provides complete building automation systems.

## BUILDING AUTOMATION SYSTEMS

► **In 2015**, Horwitz acquired Thermech which provides thermal and vapor barriers for all types of mechanical systems.

## THERMAL AND MECHANICAL INSULATION SYSTEMS

► **In 2016**, Horwitz entered into the electrical arena and now provides full service design-build electrical construction and maintenance.

## ELECTRICAL

► **In 2017**, Horwitz acquired the assets of TNC Industries, Inc., a mechanical service contractor with an emphasis on industrial ventilation.

► Horwitz moved to our current facility at 7400 49th Avenue North, New Hope.

## INDUSTRIAL VENTILATION

Horwitz entered into the millwrights arena and now offers full service millwright work for a broad spectrum of projects.

## MILLWRIGHTS

► **Today**, Horwitz is a full service specialty contractor providing engineering, installation, and ongoing support for the HVAC, plumbing, and electrical markets in the Twin Cities.

# TODAY

# HELPING DEFINE TWO GREAT CITIES

## MINNEAPOLIS AND ST. PAUL

For Horwitz, the Twin Cities is our home. We've built and maintained countless relationships here. Although our customers have taken us across the United States, we are proud to say that we've never had the need to look for business elsewhere.

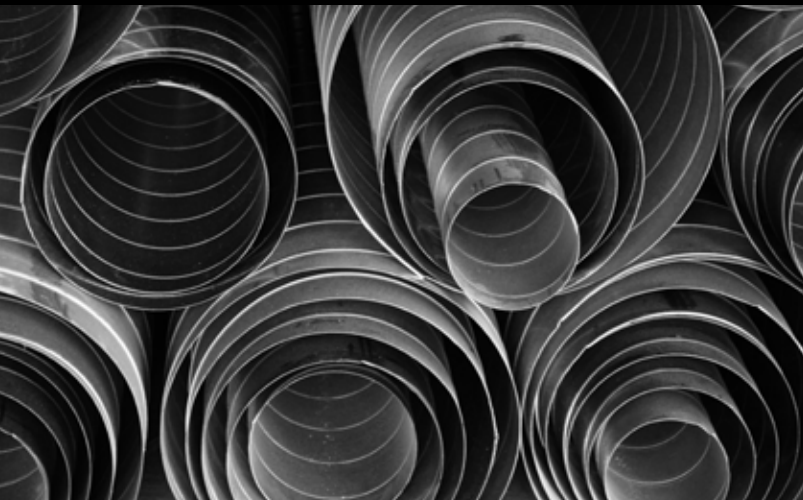
From Target to Medtronic, General Mills to the University of Minnesota, we've grown along with the businesses and institutions that have made the Twin Cities one of the most vibrant areas in the country.



St. Paul, as viewed across the Mississippi River.



OVER  
4000  
PROJECTS  
PER YEAR



FROM  
\$500 TO  
OVER  
\$40 MILLION

PROJECT DIVERSITY

**Myth:** Horwitz only works on large-scale jobs.  
**Fact:** On any given day, you'll find Horwitz workers doing everything from routine maintenance jobs such as replacing an HVAC filter, to the most high-profile construction projects in the Twin Cities

– to building the mechanical room for the Target North Campus to high-purity piping installations. Our breadth of knowledge and strong customer relationships keep us busy on a wide array of projects around the Twin Cities. Whether it's

commercial, office, multi-family housing, retail, manufacturing, or medical, we have the capability and diversity to handle jobs of all budgets and sizes.



**YOU WANT  
IT ALL?**

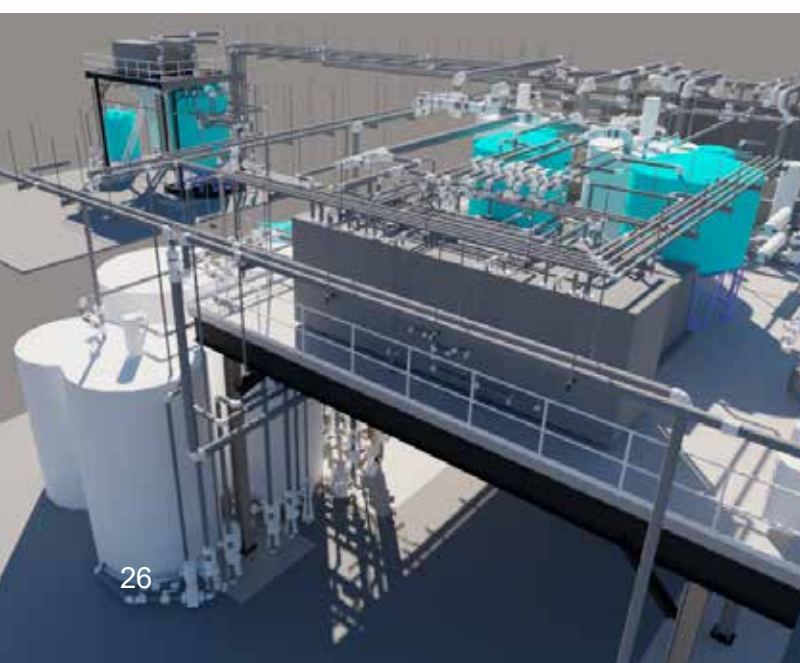
**WE'VE  
GOT IT**

**DESIGN-BUILD**

Who better to design your building than the people who build it? Our in-house engineering capabilities give us a unique advantage in our industry and offer our clients a more enjoyable experience. The benefits of working with a design-build contractor include:

- Lower costs
- Increased speed and efficiency
- Continuity and accuracy
- Integrity and ownership of projects
- More effective, single-source communication
- Reduced response time and risk
- Client and contractor are partners working toward the same goal

Operating as a design-build company requires knowledge, skill, and dedication. At Horwitz, we wouldn't have it any other way.



MAC INTERCONTINENTAL HOTEL  
MSP AIRPORT



365 NICOLLET



ANNUAL DBIA  
Upper Midwest Region  
Awards Competition  
**WINNER**

**AC MARRIOTT  
HOTEL  
DT MINNEAPOLIS  
2017 DESIGN-BUILD  
EXCELLENCE AWARD**

Commercial Buildings  
CATEGORY  
Mortenson Construction  
PARTNER



**TOP  
PROJECTS  
of 2018**  
FINANCE & COMMERCE



MOZAIC EAST



ATHLETES VILLAGE  
UNIVERSITY OF MINNESOTA



ANNUAL DBIA  
Upper Midwest Region  
Awards Competition  
**WINNER**

**MINNESOTA  
SENATE BUILDING  
ST. PAUL  
2017 BEST PROJECT  
AWARD**

Competing with Projects in  
**ALL CATEGORIES**

—AND—  
**2017 DESIGN-BUILD  
EXCELLENCE AWARD**

Government Buildings  
CATEGORY  
Mortenson Construction  
PARTNER





# KEEPING OUR MINDS SHARP

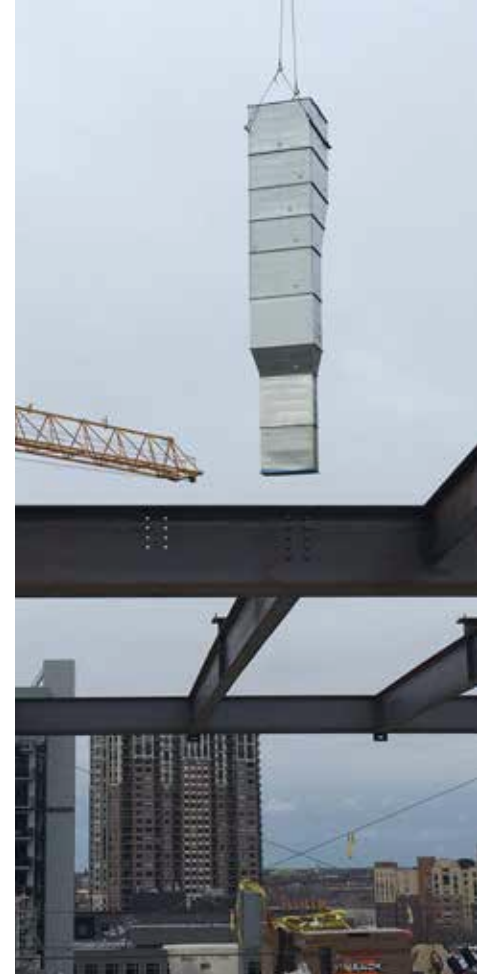
## TECHNOLOGY

Horwitz engineers use the most up-to-date technology available. Our design team utilizes Autodesk Building Suites with Revit, NavisWorks, Trimble SysQue, and Fabrication CADmep to furnish state-of-the-art construction documents. We have a tremendous amount of BIM projects under our belt and consider ourselves to be a leader in this field. Through research, webinars, and collaborating with other contractors, suppliers, and vendors, we keep ourselves at the forefront of engineering technology.



THRIVENT FINANCIAL HEADQUARTERS

**THRIVENT FINANCIAL HEADQUARTERS:** This 8-story office structure includes east and west riser shafts that house the supply and return duct risers that extend from the rooftop units down to the first floor. The risers were rigged and lifted from the trucks to the top of the building, and down the shafts. The Horwitz team innovated a new process and saved 300 man hours.



## AND OUR HANDS BUSY

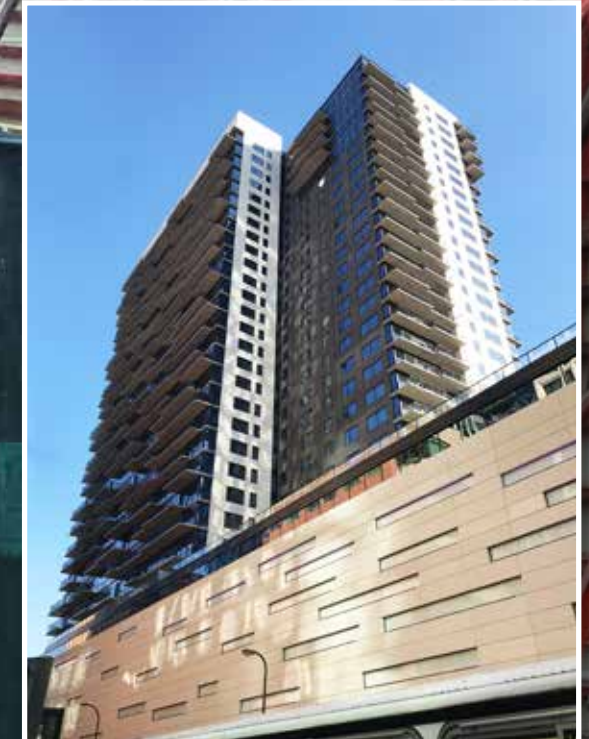
### CRAFTSMANSHIP

Designs from the office become reality in the field by highly skilled workers. From plumbers to pipefitters, sheet metal workers to electricians and insulators, Horwitz hires, trains, and continues to educate the best union craftsmen in the industry. With cumulative experience of more than 400 years, our foremen work closely with our engineers to ensure seamless constructability, leading to increased efficiency, productivity, and timeliness.

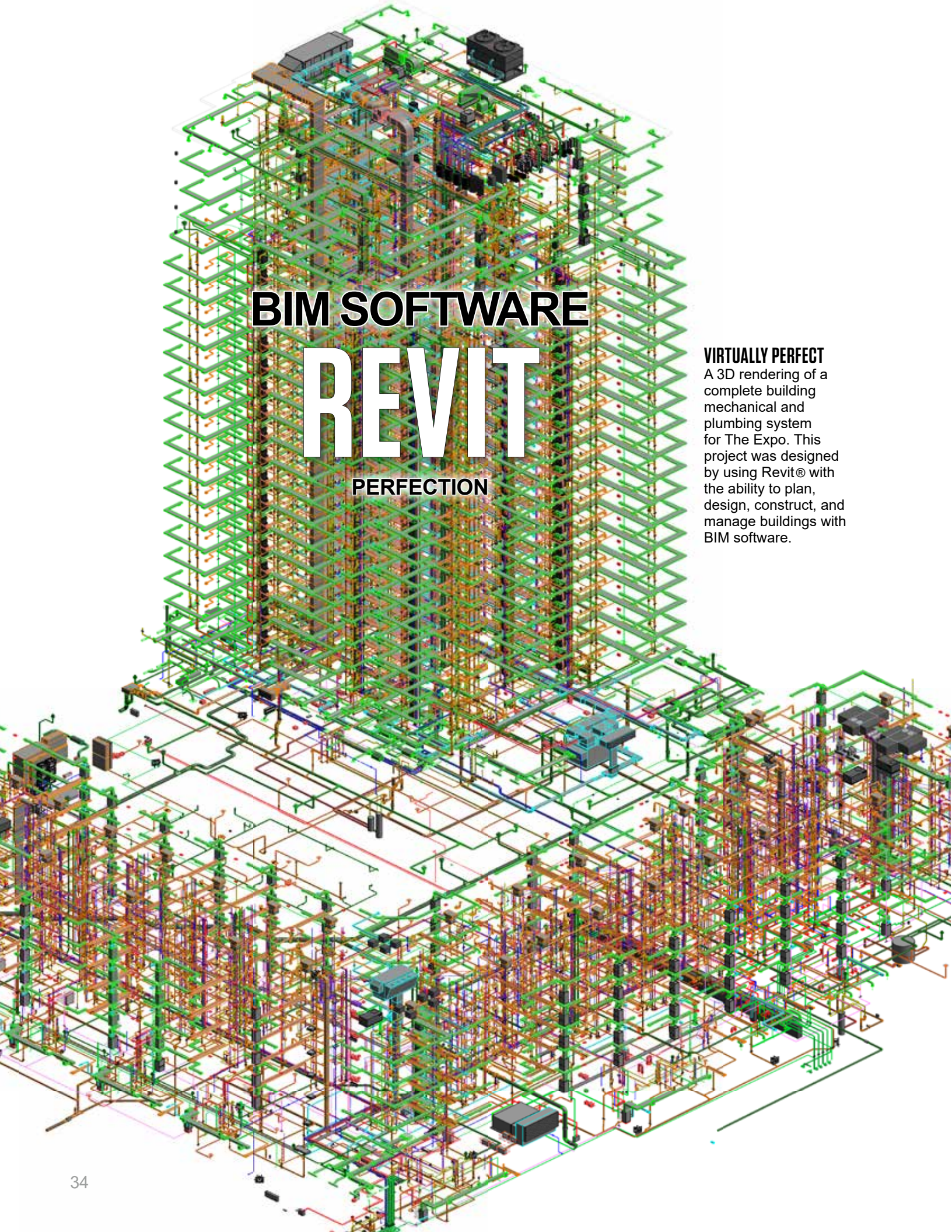


# 3D MODELS IN TRIMBLE ROBOTICS

**WORKING SMARTER** A Horwitz pipefitter uses a robotic total station from Trimble to conduct layout from a 3D model. Horwitz has uniquely pioneered real-work design. Trimble seamlessly includes all major players on the construction team on just "one" program.

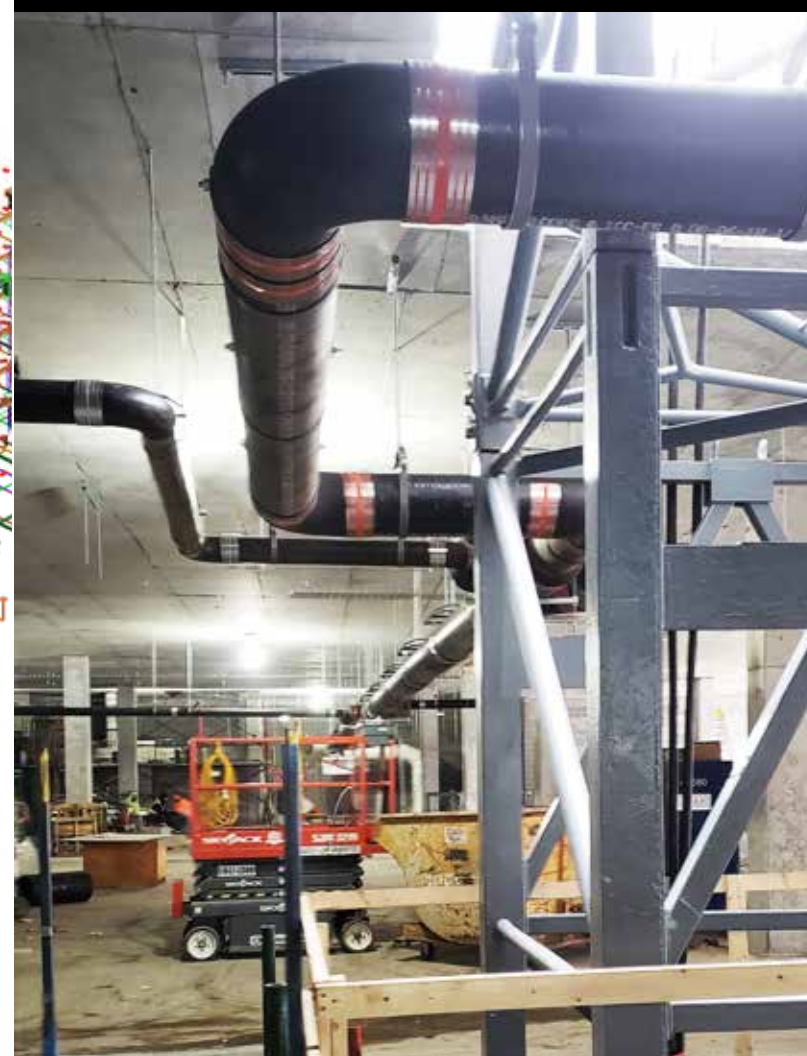


365 NICOLLET Installing of deep sump



# BIM SOFTWARE REVIT PERFECTION

**VIRTUALLY PERFECT**  
A 3D rendering of a complete building mechanical and plumbing system for The Expo. This project was designed by using Revit® with the ability to plan, design, construct, and manage buildings with BIM software.





**A CUT ABOVE THE REST** Our trades team up to use the latest technologies that allow for precise crafting in HVAC piping and plumbing pre-fabrications. When the design engineers model piping, it is within 1/256th of an inch. The pre-fabrication team replicates spooled models for faster field installation.



**GUTS AND GLORY**

# PRE-FABRICATION

PRECISION



# SAFETY DIRECTOR IS THE **MOST IMPORTANT** ROLE AT HORWITZ

## SAFETY

In a world of large machines, heavy objects, tall buildings, and extreme temperatures, everyone needs to make safety a priority. Meet Robert Homer. Safety is so important to Horwitz that we employ a full-time Safety Director. Robert's job is to protect our most valuable asset: our employees.

Horwitz is proud to have **Over Seven Years / 4MM + Hours Without a Lost Time Injury**. This is a tribute to great leadership and an exceptional field team. Our staff is trained to minimize workplace injuries of every type. Industrial workplace injuries have been reduced nationally by 35 percent since 2003 through programs like ours. Construction sites are toured weekly by our safety team to ensure worker safety. All Horwitz employees receive safety training prior to setting foot on a job site. Tool Box Talks, our annual safety seminar, and our safety newsletter reinforce our commitment to a safe workplace. Additionally, all foremen and project managers receive OSHA® 30 Training.

Getting our employees home safely is of the utmost importance to Horwitz. There's a reason our motto is "Always Safe."



## MINNESOTA SAFETY COUNCIL

Drive  
SAFE

Work  
SAFE

Live  
SAFE

**2019 OUTSTANDING ACHIEVEMENT AWARD**

**2018 OUTSTANDING ACHIEVEMENT AWARD**

In Recognition of Excellence in Injury  
Prevention Performance in Occupational Safety

**2017 MERITORIOUS ACHIEVEMENT AWARD**

**2016 MERITORIOUS ACHIEVEMENT AWARD**

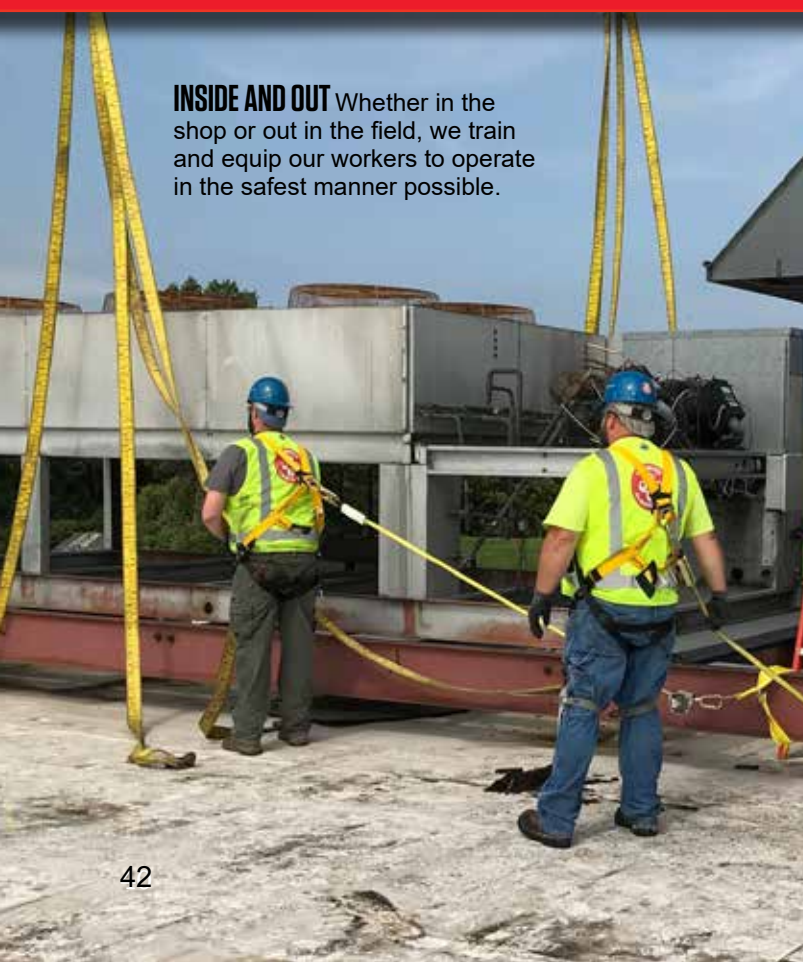
In Recognition of Excellence in Injury  
Prevention Performance in Occupational Safety



**ALWAYS SAFE** Workers in the field are required to wear PPE (personal protective equipment) at all times. Safety work boots, safety vest, protective eyewear, gloves, and hard hat. Always safe – all the time.



# SAFE ALWAYS SAFE ALWAYS SAFE ALWAYS SAFE ALWA



**INSIDE AND OUT** Whether in the shop or out in the field, we train and equip our workers to operate in the safest manner possible.



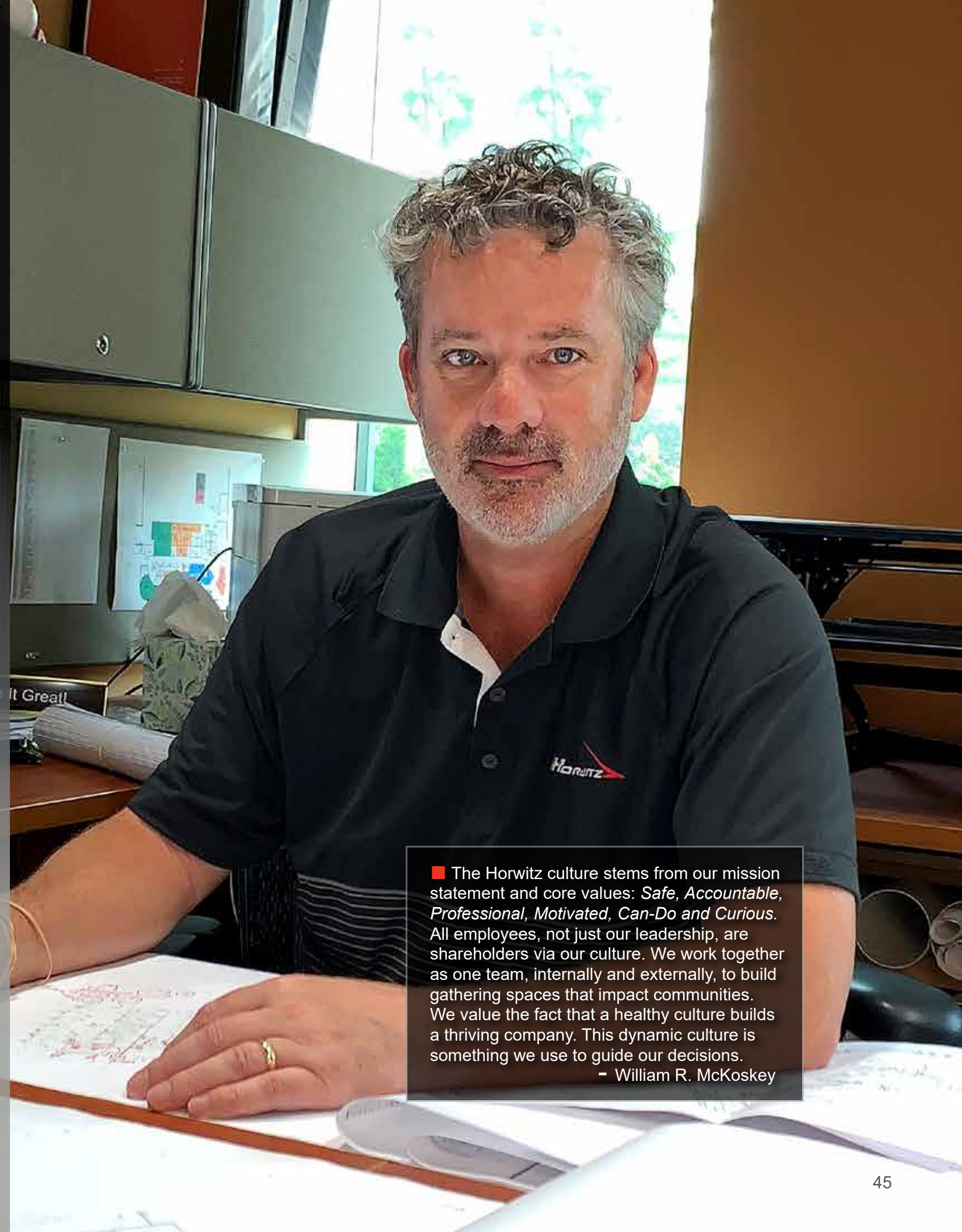
# A FOOTPRINT SPANNING 15,000,000 SF AND COUNTING

With more than 15,000,000 square feet of Class A office space successfully designed and constructed, Horwitz CEO, Bill McKoskey (pictured right), is not one to sit back and watch others work; neither are President Stu McIntosh, Construction General Manager Eric Olson, Lead Estimator Bob Reynolds, Pre-Construction Manager Todd Matelski, Engineering Manager Justin DeMars, General Service Manager Robbie Skantz, and CFO Cindy Clemens. Horwitz is proud of our exceptional team.

Our 100 year legacy is owed to ongoing attention to hiring talented and committed people. Together, they have more than 227 years of experience as professionals and 153 years of experience at Horwitz and they're far from done. Though Horwitz has been around for over 100 years, the leadership and work ethic of the Principals infuses the company with the energy of a startup.



L to R: Justin | Bob | Robbie | Stu | Bill | Cindy | Eric | Todd



■ The Horwitz culture stems from our mission statement and core values: *Safe, Accountable, Professional, Motivated, Can-Do and Curious*. All employees, not just our leadership, are shareholders via our culture. We work together as one team, internally and externally, to build gathering spaces that impact communities. We value the fact that a healthy culture builds a thriving company. This dynamic culture is something we use to guide our decisions.

- William R. McKoskey



# LEGACY OF LOYAL RELATIONSHIPS

## COMMITMENT

For decades, Horwitz has developed great partnerships. We are strongly committed to each project—starting with initial construction to the lifetime maintenance of each building. Horwitz's commitment to *Make It Great* is unwavering.

Some of our many ongoing partnerships include:

### 1950s

General Mills  
Pillsbury

### 1960s

C.F. Haglin & Sons Co.  
Kraus-Anderson  
Medtronic  
Opus

### 1970s

CHS  
Johnson Screens— Bilfinger  
SuperValu  
Toro  
Valspar

### 1980s

Cypress Semiconductor  
Gittleman Construction M.A.  
3M  
M.A. Mortenson Co.  
Polar Semiconductor  
Ryan Companies US  
Seagate Technology  
TEL-FSI  
UTC Aerospace Systems  
University of Minnesota

### 1990s

Adolfson & Peterson  
Construction  
Andersen Windows  
Boston Scientific  
James Steele Construction  
McGough Construction  
PCL Construction Services  
Target  
Welsh Construction Company

### 2000s

D.J. Kranz Company  
Duke Construction  
J.E. Dunn Construction Group  
Jorgenson Construction  
KM Building Company  
Knutson Construction  
RJM Construction

### 2010s

Anderson Companies  
Carleton College  
Children's Hospitals and Clinics  
Doran Construction  
Englesma Construction  
Hamline University  
North Memorial Healthcare  
Prime General Contractors  
Stahl Construction  
Terra General Contractors  
University of Northwestern  
University of St. Thomas  
Weitz Company



365 NICOLLET

# AN OUNCE OF PREVENTION

## PREVENTATIVE MAINTENANCE

Preventative maintenance is a critical investment on your HVAC and plumbing equipment. Improper or neglect of preventative maintenance adversely affects a building's operational budget. This includes total energy cost, equipment uptime, productivity, air quality, and longevity – not to mention the waste of natural resources and expansion of the carbon footprint. The lower the level of maintenance, the higher the likelihood of breakdown and costly repairs. With more than 30 years of preventative maintenance agreements, Horwitz currently has over 330 preventative maintenance contracts in the Twin Cities alone. Our service technicians are exceptionally skilled and highly trained to ensure that your building's mechanical systems are performing properly. Occasionally, we even take on ownership of a building's mechanical systems. Now that's unique.



24  
7  
365

**EMERGENCY SERVICE**

It's not a matter of *if* your building systems will break down, it's a matter of *when*. Horwitz employs a team of emergency service technicians who have a full understanding of all disciplines. These are think-on-your-feet techs who can analyze and fix a system on the spot. In industries where performance is critical – data centers, pharmaceutical manufacturing, hospitals, and more – any interruption of service can be catastrophic. When you need it most, Horwitz will be there with the best service available. Guaranteed.



The LEED® certification logo at the American Academy of Neurology Institute (AANI) building in Minneapolis.



# TAKING THE LEED SUSTAINABILITY

LEED® is the green standard for building excellence, intelligent design, and environmentally sustainable products and systems. Mechanical systems are one of the key consumers of energy and water in any building. Inefficiencies in control programming, poor maintenance, aging plants, and obsolete technologies can have a huge environmental and financial impact.

Some of the many LEED® projects Horwitz has worked on include:

- Wells Fargo: LEED® Platinum
- Blattner Energy: LEED® Platinum
- Children's Clinic ACC: LEED® Gold
- Amherst H. Wilder Foundation: LEED® Gold
- T3 Office: LEED® Gold
- 365 Nicollet: LEED® Gold
- Washburn Center for Children: LEED® Gold
- The Nic on Fifth: LEED® Silver
- Hazelden: LEED® Silver
- Two MarketPointe+: LEED® Silver
- CBRE: LEED® Silver
- Norman Pointe II: LEED® Certified
- Polaris R&D: LEED® Certified

Horwitz has several LEED® accredited professionals on staff. Their ability to assist with the market transformation to green and sustainable communities is invaluable. Sustainability is a key goal on every project. With each project, our exposure to new, sustainable technologies grows. That's why we're a leader in providing sustainable solutions to the commercial building industry.

# CAPABILITIES

Horwitz specializes in the new construction, renovation, and retrofit of commercial, industrial, and institutional facilities in the Twin Cities.



**ALWAYS  
SAFE**  
AND WORKING  
FOR OUR  
CLIENTS

**SAFETY**



**INDUSTRIAL VENTILATION**



**HIGH PURITY PROCESS PIPING**



**DESIGN-BUILD**



**PLUMBING**



**MECHANICAL INSULATION**



**MILLWRIGHT**



**HVAC PIPING**



**FABRICATION**



**SHEET METAL**



**BUILDING AUTOMATION**

**SAFE  
ACCOUNTABLE  
PROFESSIONAL  
MOTIVATED  
CAN DO  
CURIOUS**

**CORE VALUES**



**ELECTRICAL**



**PREVENTATIVE MAINTENANCE**

**24/7/365**

**SERVICE**

The logo for Horwitz, featuring the word "HORWITZ" in a bold, black, sans-serif font. A red arrow-like shape points to the right, starting from the end of the word and extending above it.

**HORWITZ**

# CORE VALUES

**SAFE**  
**ACCOUNTABLE**  
**PROFESSIONAL**  
**MOTIVATED**  
**CAN DO**  
**CURIOUS**



# FULLCIRCLE THE HORWITZ CHARITABLE GIVING PROGRAM

Building Our Communities in More Ways Than One.



**HORWITZ** has proudly donated over \$120,000 annually. During the last ten years Full Circle has also donated thousands of volunteer hours!



*Thank You*

**for the First 100 Years of Partnership!**



**We Look Forward to Working Together for the Next 100 Years!**



7400 49th Avenue N, New Hope, MN 55428  
www.horwitzinc.com | 763-533-1900